

BG4 Bench Test

1. To prepare for testing adjust zero _____ of the RZ-25 tester.

- A. Point
- B. Reference
- C. Calibration

2. A _____ exhalation or inhalation valve could be caused by a defective valve seat or valve disc.

- A. Leaking
- B. Perforated
- C. Leaky

3. Dow _____ is to be used to lubricate O-rings.

- A. Molykote 111
- B. Corning 111
- C. Lubricant 111

4. The factory packed _____ is good for 4 years from the manufacture date.

- A. Canister
- B. Cartridge
- C. Regencanister

5. The pressure relief valve is designed to open when the pressure within the breathing circuit is between ___ and ___ millimeters (+2 mbar and +5 mbar) of pressure measured on the water gage.

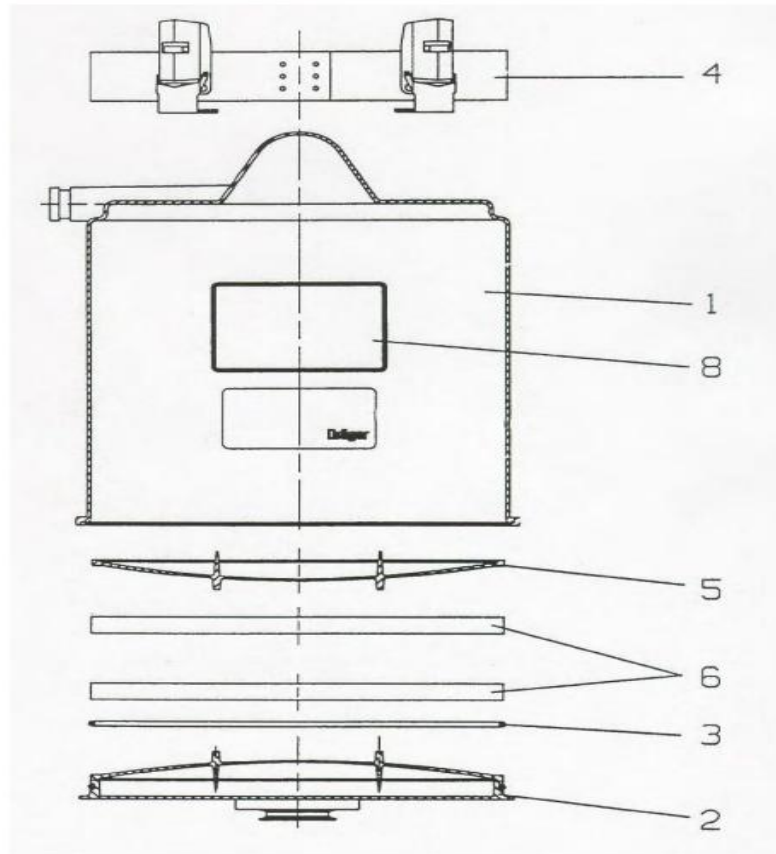
- A. + 20, +50
- B. + 25, +50
- C. + 25, +55

BG4 Bench Test

6. During testing of the inhalation valve, if valve is _____ properly, +10 mbar is indicated on the pressure gauge.
- A. Sealing
 - B. Opening
 - C. Operating
7. A _____ cylinder is full at _____ psi when a + is stamped at hydro test.
- A. Steel, 3135
 - B. Carbon Fiber, 3000
 - C. Aluminum, 3100
8. A fully filled steel oxygen cylinder _____ liters of medical oxygen.
- A. Takes 444
 - B. Contains 544
 - C. Holds 440
9. The weight of a fully _____ BG-4 apparatus is 15kg (33 lbs)
- A. Filled
 - B. Charged
 - C. Operational
10. Check the supply of oxygen gas on the Sentinel at intervals of approximately _____ minutes.
- A. 15
 - B. 10
 - C. 20

BG4 Bench Test

Refillable Cartridge



1-8 Refillable Cartridge	
2 Lid	5 Refillable Scrubber Screen
3 _____, Refillable Cartridge (11)	6 Filter _____ (12)
4 Strap with Tension Spring Hook	8 _____ Approved Label (13)

(11)

- A. Seal
- B. O-Ring
- C. Gasket

(12)

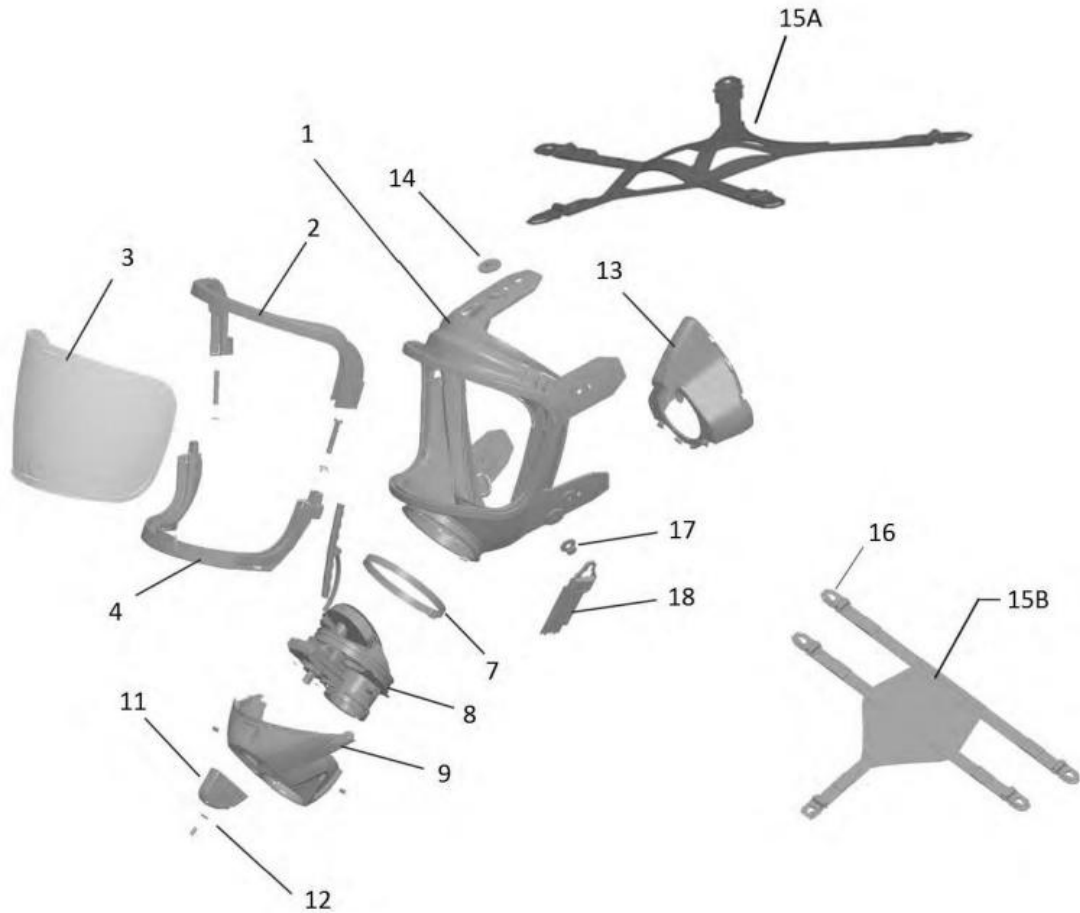
- A. Cushion
- B. Mats
- C. Pads

(13)

- A. Dräger
- B. MSHA
- C. NIOSH

BG4 Bench Test

FPS 7000 Mask



<p>1 Mask Body FPS 7000</p> <p>3 _____ (14)</p> <p>7 Clamp</p> <p>8 _____ (15)</p>	<p>14 Button</p> <p>15B _____ (16)</p> <p>17 _____ Button (17)</p> <p>18 Neck Strap</p>
--	---

- (14)**
- A. Shield
 - B. Lens
 - C. Visor

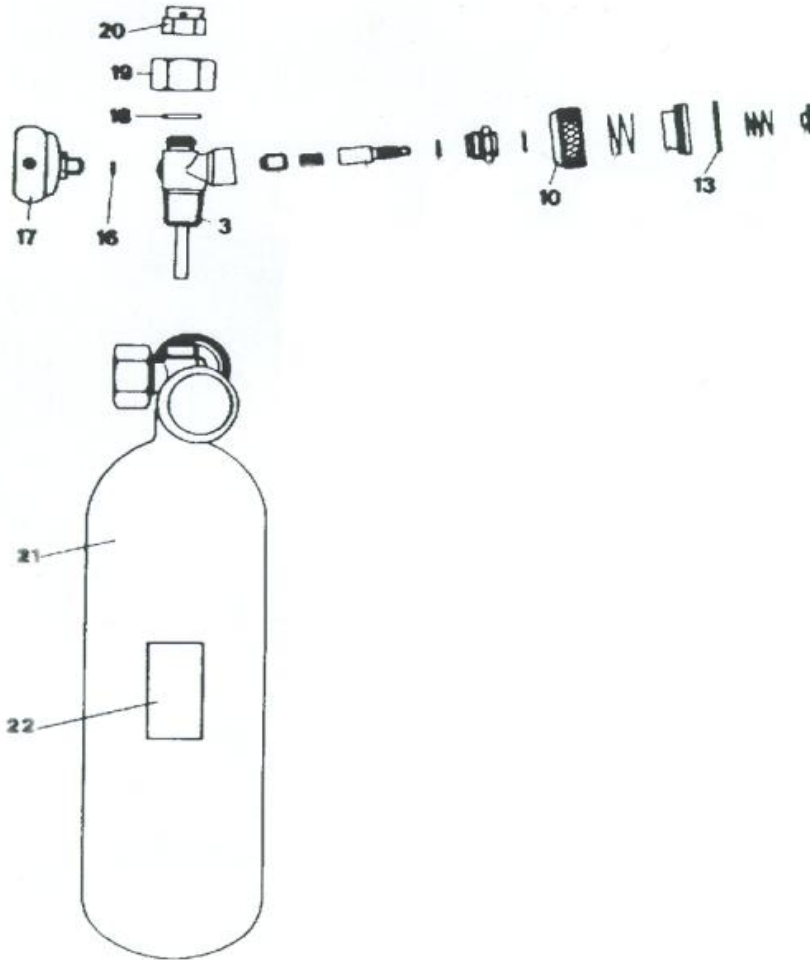
- (15)**
- A. Connector Piece
 - B. Tee Connector
 - C. Connecting Coupler

- (16)**
- A. Strap
 - B. Hairnet
 - C. Harness

- (17)**
- A. Double
 - B. Single
 - C. Push

BG4 Bench Test

Oxygen Cylinder



<p>3 _____ Housing (18)</p> <p>10 Hand-Wheel</p> <p>13 _____ Ring (19)</p>	<p>18 Lock _____ (20)</p> <p>21 Oxygen Cylinder</p> <p>22 Label</p>
--	--

(18)

- A. Pressure
- B. Reducer
- C. Valve

(19)

- A. Ball
- B. O-
- C. Safety

(20)

- A. Nut
- B. Washer
- C. Ring